







-  **Biometric**
-  **Mutual**
-  **Proximity**
-  **Persistent**

Complete Zero Trust authentication security

Proximia® meets all requirements of Zero Trust Architecture (ZTA), merging cyber and physical authentication to deliver unprecedented security to protect data from breach, theft, and ransomware. Passwords and usernames are eliminated, reducing vulnerabilities and cyberattacks, and a full real-time audit trail tracks assets and people.

To achieve comprehensive security and authentication coverage, choose from a range of IoT devices* to authenticate, track, and monitor access.



*Image does not depict all available devices.

Going beyond passwords, MFA and one-time biometric logins, Proximia delivers the most powerful, ZTA -adherent solution on the market today.



Dynamic-Proximity

Leveraging physical closeness of users and IoT devices, authentication persists only within approved proximity, ending if users step away.



Mutual Trust

Users and devices verify the other's identity upon authentication, ensuring mutual trust is established.



Persistent Authentication

Once biometrically authenticated, authentication persists using wearables or IoT devices, continuously validating authentication.

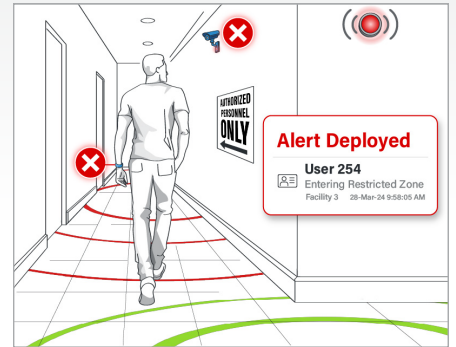
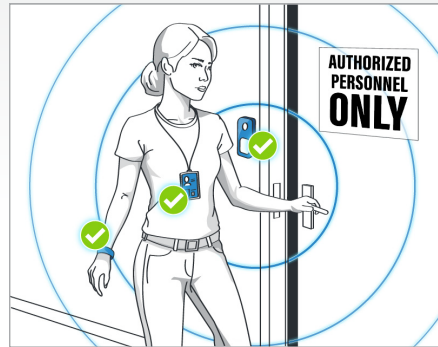
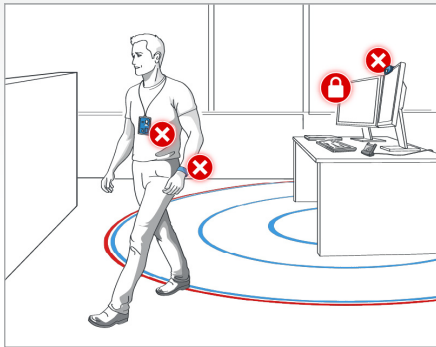
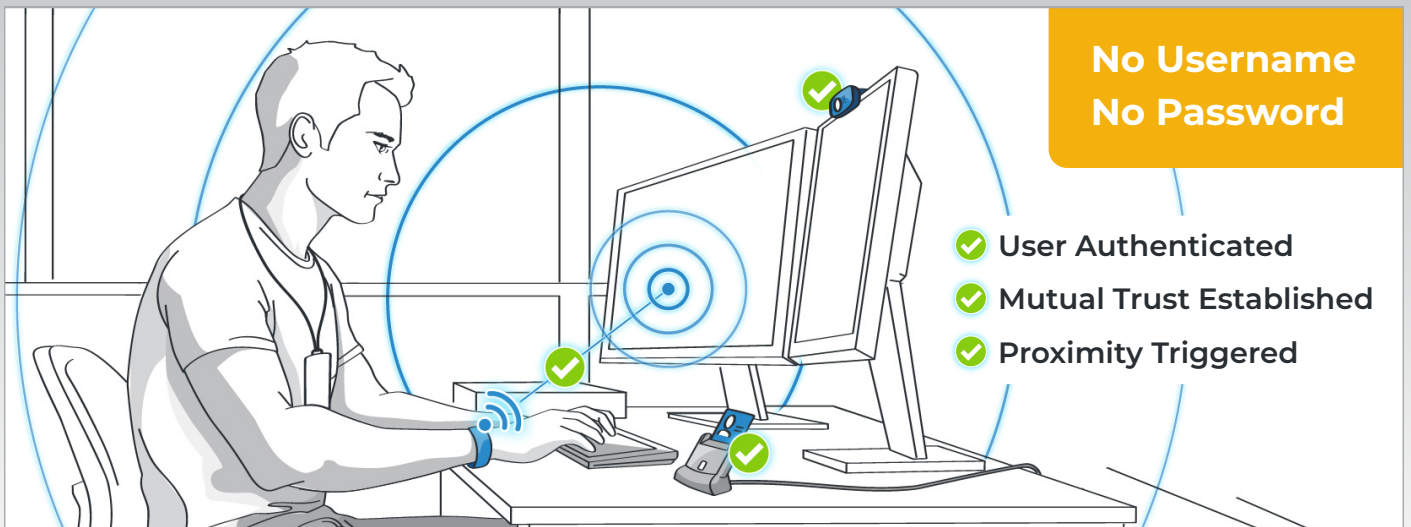
Solve for authentication with Proximia. Let's talk.

sales@proximia.com | (844) GET-PROX or (844) 438-7769

Proximia is easy to integrate, endlessly scalable, intelligently evolving, and flexible for future growth

INTEGRABLE | SCALABLE | EXTENSIBLE | FLEXIBLE

Proximia continuously monitors users and IoT devices, providing real time event alerts and verifying identity at access points. This advanced authentication protocol can trigger IoT devices, doors, gates, PC's, networks, cameras, and more, to manage access securely, monitoring every authorization event for security, automation, and audit tracking.



ZERO TRUST ARCHITECTURE

The Gold Standard of Cybersecurity

- ✓ Identity
- ✓ Devices
- ✓ Networks
- ✓ Data
- ✓ Applications & Workloads
- ✓ Automation & Orchestration
- ✓ Visibility & Analytics

